

# PORTWEST®

## THE FUTURE OF WORKWEAR

### Hi-Vis T-Shirt

- » Available in: yellow & orange
- » EN ISO 20471 Class 2
- » 55% cotton & 45% polyester
- » 1 pocket for secure storage
- » 2 retro reflective strips
- » 35+ UPF rated fabric to block 97% of UV rays

NEW



S	M	L	XL	2XL	3XL	4XL
36-38	40-41	42-44	46-48	50-52	54-55	56-58
Model			Price			
T181			£18.00			

### Hi-Vis Bodywarmer

NEW

- » Available in: yellow & orange
- » EN ISO 20471 Class 1 (sizes S & M) & EN ISO 20471 Class 2 (size L upwards)
- » Durable polyester/cotton fabric with Texpel stain resistant finish
- » 6 pockets for ample storage



S	M	L	XL	2XL	3XL	4XL
36-38	40-41	42-44	46-48	50-52	54-55	56-58
Model			Price			
PW374			£68.45			

### Hi-Vis Polo Shirt

- » Available in: yellow & orange
- » EN ISO 20471 Class 2
- » 55% cotton & 45% polyester
- » 1 pocket for secure storage
- » 2 retro reflective strips
- » 35+ UPF rated fabric to block 97% of UV rays

NEW



#### Information

MORE HI VIS PPE  
AVAILABLE - PLEASE  
CALL FOR DETAILS

S	M	L	XL	2XL	3XL	4XL
36-38	40-41	42-44	46-48	50-52	54-55	56-58
Model			Price			
T180			£20.25			

Hi-Vis Softshell Jacket

- » Available in: yellow & orange
- » EN ISO 20471 Class 3
- » Made of durable breathable, windproof & water resistant fabric
- » Ezee zip allows for quick & easy fastening even when wearing work gloves

NEW



S	M	L	XL	2XL	3XL	4XL
36-38	40-41	42-44	46-48	50-52	54-55	56-58
Model			Price			
T402			£66.55			

Hi-Vis Winter Jacket

NEW

- » Available in: yellow & orange
- » EN ISO 20471 Class 3
- » Waterproof & breathable with taped seams to prevent water penetration. Texpel stain resistant finish repels dirt & stains
- » Quilt lined for thermal insulation



S	M	L	XL	2XL	3XL	4XL
36-38	40-41	42-44	46-48	50-52	54-55	56-58
Model			Price			
T400			£92.30			

Hi-Vis Extreme Trouser

NEW

- » Available in: yellow & orange
- » EN ISO 20471 Class 2
- » Waterproof & breathable with taped seams to prevent water penetration. Premium stain resistant finish repels oil, water & grime
- » 8 pockets for ample storage



S	M	L	XL	2XL	3XL	4XL
30-32	33-34	36-38	40-41	42-44	46-47	48-50
Model			Price			
PW342			£59.40			

Hi-Vis Work Trouser

NEW

- » Available in: yellow & orange
- » EN ISO 20471 Class 2
- » 100% polyester
- » 12 pockets for ample storage
- » Adjustable hem for all leg lengths



S	M	L	XL	2XL	3XL	4XL
30-32	33-34	36-38	40-41	42-44	46-47	48-50
Model			Price			
T501			£49.90			



## Fire Extinguishers



MAINTENANCE, INSTALLATION,  
FIRE RISK ASSESSMENTS  
& TRAINING AVAILABLE  
- CALL FOR DETAILS

ALL EXTINGUISHERS  
ARE APPROVED  
TO BS EN 3

Fire Risks	Water	Water Additive	Carbon Dioxide	AFF Foam	ABC Powder	Wet Chemical
Freely burning materials: Wood, Paper, Textiles etc.	✓	✓		✓	✓	✓
Flammable Liquids: Petrol, Oil, Fats, Paints etc.			✓	✓	✓	✓
Flammable Gases					✓	
Electrical Hazards			✓		✓	
Cooking fats - such as deep fat fryers oils						✓

## Fire Control



## Twin Fold Work Lights



- » High power folding work lights with tough ABS case
- » 3200 lumen 110V & 240V versions with 50% or 100% output
- » Supplied with 3M cable & CEE or BS plug
- » 1500 lumen Li-ion rechargeable dimmable to 10% output giving up to 7.5hrs runtime
- » Supplied with USB charging lead
- » Anti glare diffused lens for shadow free light
- » Floor standing opens to 290° or tripod mountable

Description	Model	Price
110v Folding Work Light	TF3200-110V	£69.95
110v Folding Work Light with 1500mm Tripod	TF3200-110V-TRI	£89.95
240v Folding Work Light	TF3200-240V	£69.95
240v Folding Work Light with 1500mm Tripod	TF3200-240V-TRI	£89.95
Rechargeable Folding Work Light	TF1500R	£69.95
Rechargeable Folding Work Light with 1500mm Tripod	TF1500R-TRI	£89.95

## TUFF-T 4000 Work Lights



Utilise your Makita, Bosch, Hitachi or Panasonic power tool battery with our unique 4 in 1 adapter

- » High power 4000 lumen work lights available in Hybrid mains 110V & 240V or rechargeable versions, all of which can use the Li-ion battery or 4 in 1 Power Tool adapter
- » Colour temperature 6500K comparable to daylight
- » T4000R has runtimes of 4hrs 100%, 8hrs 50%, 16hrs 25%
- » Hook design handle with locking system for scaffolding etc
- » Adjustable base tripod mountable with built in magnets
- » IP65 Weatherproof with 2 year warranty

Description	Model	Price
Work Light with 4 in 1 Power Tool Adapter	T4000A	£109.90
Work Light with High Capacity Rechargeable Battery	T4000R	£149.95
110v Work Light	T4000H-110V	£119.95
240v Work Light	T4000H-240V	£109.95

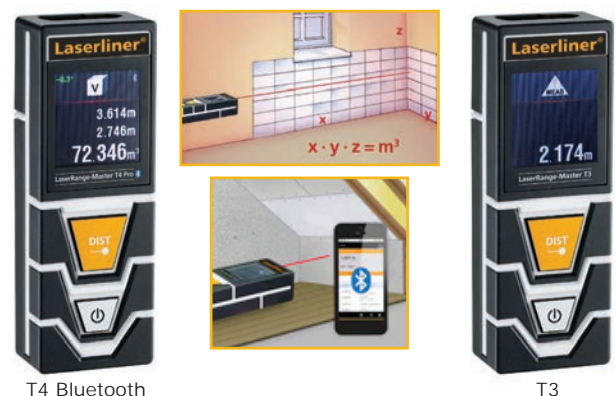
## CompactCube - 90° Set Out Cross Line Laser



- » PowerBright-Laser: Special high-performance laser diodes project extremely visible laser lines
- » This unit produces 3 very visible laser lines which make it outstanding for the alignment of tiles, wall studding, windows, doors, etc.
- » The 2 vertical lines are aligned at right angles
- » Automatic Level: automatic alignment by virtue of a magnetic pendulum system
- » Individually switchable laser lines
- » Additional slope mode to align angled surfaces.
- » Out-Of-Level: is indicated by optical signals when the unit is outside its self-levelling range
- » Transport lock: A pendulum lock protects unit during transport
- » Small, compact design – fits in any toolbox
- » Sturdy, ergonomically designed, rubberised casing

Description	Model	Price
CompactCube - 90° Laser	036.150A	£99.99

## LaserRange-Master



- » Point-precise measuring with laser to determine lengths exactly
- » The area & volume functions permit the acquisition of room sizes, for example to calculate material quantities
- » 360° inclination sensor for determining the horizontal & vertical distance
- » High measuring accuracy 30 or 40 M:  $\pm 2 \text{ mm}^*$
- » Inside measurement range: 0.2 M to 30 or 40 M
- » 3 selectable measurement reference points: front, tripod & rear
- » Continuous measuring function
- » Illuminated 3-line colour LCD with touch function
- » Stable, ergonomic housing
- » T4 incorporates bluetooth interface with a free downloadable app for measurement data transfer

Description	Model	Price
LaserRange-Master T3 - 30M range	T3080.840A	£72.99
LaserRange-Master T4 Pro with Bluetooth - 40M range	T3080.850A	£89.99



## Fire Chests

- » Ideal for storing valuables, documents & digital items from fire
- » ETL verified waterproof against submersion for up to 72 hours (except SML-L1200)
- » Carrying handle for portability
- » Key locking complete with 2 keys
- » After fire replacement guarantee

FROM ONLY  
£47.77



SML-LCFW-30100

PRICES  
HELD



SML-LCHW-20101



SML-L1200

Description	Fire Resistance	Capacity Litres	Overall Size H x W x D mm	Internal Size H x W x D mm	Model	Price
Suitable for A5 Documents	UL/ETL verified chest - 30 minutes at 843°C	5	155 x 362 x 284	89 x 305 x 191	SML-L1200	£47.77
Suitable for A4 Documents	UL classified chest - 30 minutes at 843°C	8	168 x 391 x 363	112 x 325 x 216	SML-LCHW-20101	£85.48
Suitable for A4 Documents	UL/ETL verified chest - 1 hour at 927°C	10	193 x 419 x 375	136 x 321 x 232	SML-LCFW-30100	£106.37

## Solid Brass Padlocks

- » Corrosion resistant brass body with double locking hardened steel shackle
- » Pack size - 6
- » Horizontal shackle clearance:

4130 - 14mm  
4140 - 21mm  
4150 - 25mm



PRICES  
HELD

## Combination Padlocks

- » Solid aluminium body with a brushed metal finish & steel shackle
- » 7630D - 3 digits / 1000 codes
- » 7640D - 4 digits / 10,000 codes
- » Pack size - 4
- » Horizontal shackle clearance:

7630D - 14mm  
7640D - 22mm



PRICES  
HELD

## Excell Laminated Steel Padlocks

- » Laminated steel core for higher strength with stainless steel & zinc outer sleeve for weather resistance
- » Exclusive octagonal boron-carbide shackle for maximum cut resistance & double deadbolt locking for added protection from prying & hammering
- » Horizontal shackle clearance - 24mm



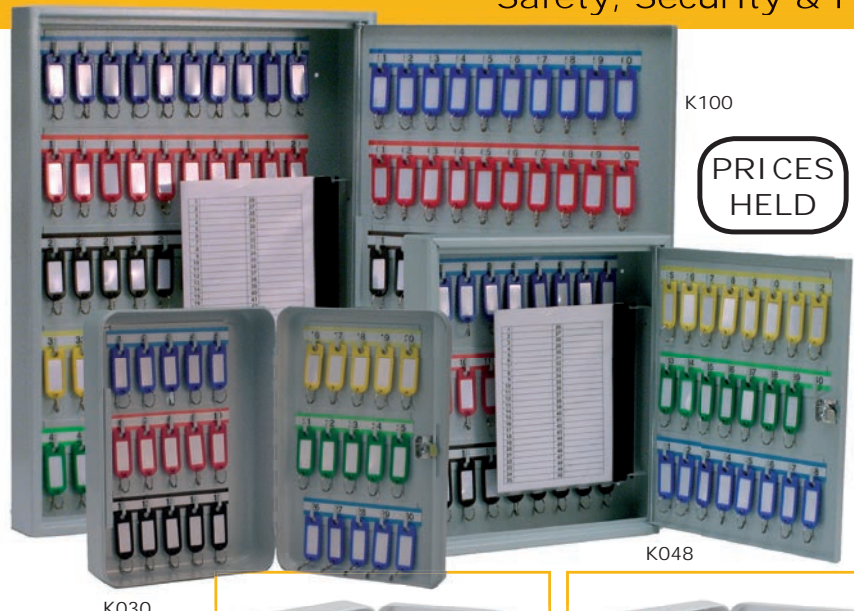
Body Width mm	Shackle Diameter mm	Shackle Length mm	Model	Price
30	5	14	4130	£36.64
40	6	21	4140	£46.28
50	7	24	4150	£73.91

Body Width mm	Shackle Diameter mm	Shackle Length mm	Model	Price
30	5	25	7630D	£44.99
40	6	26	7640D	£52.71

Body Width mm	Shackle Diameter mm	Shackle Length mm	Model	Price
50	9	25	5MEURD	£20.25
50	9	38	5MEURDLF	£22.18
50	9	51	5MEURDLH	£23.03
50	9	64	5MEURDLJ	£23.89

## Keystor

- » Sturdy steel cabinets with a tough powder coated, light grey finish
- » Fixed coloured & numbered hook bars, with matching key tabs
- » Removable key control index with the 3 larger models
- » Key locking complete with 2 keys



K100

PRICES  
HELD

K030

K048

Description	Overall Size H x W x D mm	Model	Price
20 Hook Key Cabinet	255 x 180 x 80	K020	£39.74
30 Hook Key Cabinet	300 x 210 x 80	K030	£50.03
42 Hook Key Cabinet	320 x 245 x 80	K042	£68.12
48 Hook Key Cabinet	350 x 300 x 80	K048	£112.48
64 Hook Key Cabinet	450 x 300 x 80	K064	£144.29
100 Hook Key Cabinet	550 x 380 x 80	K100	£184.03



K020



K030

## System Key Cabinets - The total solution for the storage of keys



PRICES  
HELD

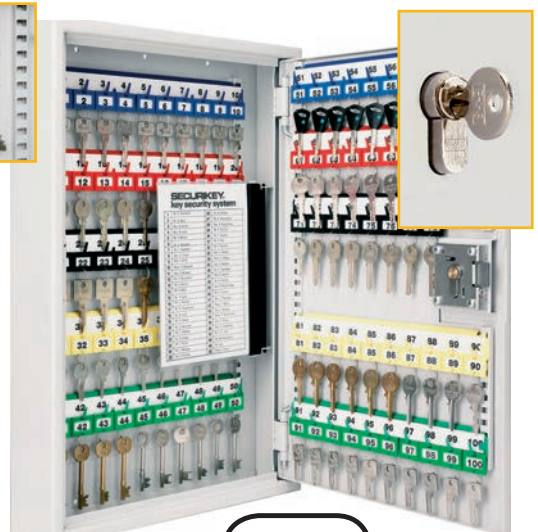
- » Pressed steel construction (1.5mm thick body & door)
- » Removable control index for added security (except KC020)
- » Adjustable hook bars cater for different key lengths
- » Keytabs are coloured & numbered to match hook bars
- » Supplied with security camlock c/w 2 keys
- » Combination or electronic locks available - call for details
- » Closed loops & security seals feature, provides an un-tamperable method of key restriction

Capacity	Overall Size H x W x D mm	Model	Price
20 Keys	260 x 185 x 80	KC020	£73.81
30 Keys	305 x 215 x 80	KC030	£96.51
35 Keys	320 x 245 x 80	KC035	£107.87
48 Keys	355 x 300 x 80	KC048	£174.92
64 Keys	450 x 300 x 80	KC064	£238.45
100 Keys	550 x 380 x 80	KC100	£289.54
150 Keys	550 x 380 x 140	KC150	£470.15
200 Keys	550 x 380 x 140	KC200	£532.60

## 'Key Vault' Security Key Cabinets

- » 2.5mm fabricated steel construction
- » Adjustable hook bars cater for different key lengths
- » Removable control index for added security
- » Keytabs are coloured & numbered to match hook bars
- » Supplied with euro profile security deadlock lock c/w 2 keys
- » Combination or electronic locks available - call for details
- » Closed loops & security seals feature, provides an un-tamperable method of key restriction

Capacity	Overall Size H x W x D mm	Model	Price
30 Keys	305 x 230 x 70	KV030	£141.93
48 Keys	355 x 300 x 80	KV048	£210.06
100 Keys	550 x 380 x 80	KV100	£361.10
200 Keys	550 x 380 x 140	KV200	£593.88
400 Keys	550 x 730 x 140	KV400	£989.04
600 Keys	550 x 730 x 205	KV600	£1210.46
48 Bunches	355 x 300 x 140	KVD048	£240.80
100 Bunches	550 x 380 x 140	KVD100	£428.16
200 Bunches	550 x 730 x 140	KVD200	£709.67



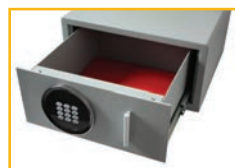
PRICES  
HELD



## Euro Vault

- » Ideal for laptops, cash or valuables
- » 2mm solid body with 4mm anti-bludgeon flush fit doors
- » £1500 recommended overnight cash rating (10x valuables)\*
- » 2 locking options: double bitted key lock or easy to use programmable digital keypad with dual user function
- » Access to the power source is via a front panel
- » Can be fixed to a wall or floor (fixings supplied)

PRICES  
HELD



Drawer Open



Electronic Locking Keypad



Key Locking



Key Locking



Electronic Locking

Description	External Size H x W x D mm	Internal Size H x W x D mm	Volume Litres	Weight kg	Model	Price
Euro Vault Key	200 x 500 x 400	195 x 495 x 350	34	17	SFEV035PHZ	£115.69
Euro Vault Electronic	200 x 500 x 400	195 x 495 x 350	34	17	SFEV035-TZE	£140.33
Euro Vault Gas Strut	150 x 400 x 350	95 x 395 x 345	13	12	SFEV-GS-TZE	£151.04
Euro Vault 12L Drawer	205 x 400 x 370	135 x 305 x 295	12	14	SFEV-DR12-TZE	£174.61
Euro Vault 17L Drawer	200 x 510 x 380	140 x 405 x 305	17	18	SFEV-DR17-TZE	£188.65



Key Locking



Electronic  
Locking

## Mini Vault Silver

PRICES  
HELD

- » Ideal in the office or at home
- » 4mm solid body with 8mm thick solid steel door
- » £4000 recommended overnight cash rating (10x valuables)\*
- » All models tested and certified to EN14450-S2
- » 2 locking options: double bitted key lock or easy to use programmable digital keypad with dual user function
- » Felt lined interior & motion sensitive interior light. Jewellery shelves included in sizes 1 & 2
- » Access to the power source is via a front panel
- » Registration system to prevent lockout situation
- » Can be fixed to a wall or floor (fixings supplied)

**SECURIKEY®**



External Size H x W x D mm	Internal Size H x W x D mm	No of Shelves	Weight kg	Key Locking		Electronic Locking	
				Model	Price	Model	Price
250 x 374 x 274	240 x 354 x 210	0	22	SFMV0K-S	£211.24	SFMV0ZE-S	£280.55
294 x 374 x 325	282 x 354 x 260	1	29	SFMV1K-S	£237.37	SFMV1ZE-S	£315.68
532 x 374 x 425	522 x 354 x 360	2	52	SFMV2K-S	£367.96	SFMV2ZE-S	£412.20



PRICES  
HELD



**Light Fire  
Protection**

**Secured by Design**



Official Police Security Initiative

## Fire Stor

- » For the safe storage of paper documents & valuables
- » Independently tested to EN-14450 S1 by VdS test house
- » 3-way locking mechanism & continuous 'dog bar' to protect the hinge edge for maximum security
- » £2000 recommended overnight cash rating (10x valuables)\*
- » CEN/VdS approved double bitted 8 lever safe lock & 2 keys
- » Filled with fire resistant material to DIN4102
- » Combination & electronic locking options - call for details

Price includes delivery to kerbside only. Delivery & place/location installation is available on application - please call for details.

External Size H x W x D mm	Internal Size H x W x D mm	No of Shelves	Capacity Lever Arch Files	Weight kg	Model	Price
860 x 600 x 520	690 x 490 x 405	1	12	95	FS1023S1	£1157.00
1220 x 600 x 520	1050 x 490 x 405	2	18	120	FS1022S1	£1327.32
1580 x 600 x 520	1410 x 490 x 405	3	24	145	FS1021S1	£1449.97
1950 x 930 x 520	1780 x 820 x 405	4	50	215	FS1020S1	£2040.42
1950 x 1200 x 520	1780 x 1090 x 405	4	65	245	FS1024S1	£2350.43

## Security Cupboards

- » Provide an extra level of security for the storage of high value equipment & materials
- » Welded all steel structure for extra strength
- » Seven lever safe lock for high security
- » Full length heavy duty hinges with concealed fixings to prevent forced entry
- » Adjustable powder coated shelves
- » Powder coated with Germ Guard Active Technology anti-bacterial paint
- » Made from 1.5mm powder coated mild steel
- » Reaction to Fire Classification EN 13501-1



### COLOUR OPTIONS

- Red
- Green
- Light Blue
- Blue
- Grey
- Yellow

specify when ordering



SC120946

SC094646

Overall Size H x W x D mm	No of Shelves	Security Cupboards		Extra Shelves	
		Model	Price	Model	Price
900 x 460 x 460	1	SC094646	£519.60	SC4646ES	£31.45
1200 x 900 x 460	2	SC120946	£723.75	SC0946ES	£48.45
1200 x 1200 x 460	2	SC121246	£1104.50	SC1246ES	£68.05
1800 x 900 x 460	3	SC180946	£1112.35	SC0946ES	£48.45
1800 x 1200 x 460	3	SC181246	£1359.65	SC1246ES	£68.05

## Heavy Duty High Security Storage Cabinets

- » All welded construction, designed to minimise intrusion
  - » Produced from heavy gauge material
  - » "Jemmy" proof with built in security features
  - » Uses a 7 lever no tamper locking system with anti-pick levers
  - » Keys are individual to each unit
  - » CE marked & plated
  - » Hand or foot operated door opening system, prevent putting down what you are carrying to open a door on this cabinet
  - » The door handles & lock are recessed for security & there are no protruding parts to be damaged by passing equipment
  - » Cabinet can be moved without unloading. The shelves in the doors are positioned to prevent items stored on the interior shelves from falling off when the cabinet is moved
  - » Lifting eyes fitted on two door unit
  - » Stove enamel painted yellow finish
- N.B. A Fork Lift will be needed to unload these units



Image showing the foot mechanism showing how the door can be opened even if your hands are full!



YSC01Z



YSC02Z

Overall Size H x W x D mm	No of Shelves	Weight kg	Model	Price
1560 x 1020 x 615	3	180	YSC01Z	£2018.10
1610 x 1830 x 615	3	275	YSC02Z	£2578.90





## Dock Bumpers

- » Reduce damage to loading docks & buildings caused by vehicle impact
- » The use of rubber dock bumpers, cushions the impact thus minimising ongoing maintenance requirements
- » The correct thickness bumper also helps with the positioning of loading dock equipment such as dock levellers



Overall Size mm	Thickness mm	Fixing Holes	Fixing Required	Model	Price
254 x 457	50	2	TWB-F4	TWB-1018-2	£33.31
254 x 457	100	2	TWB-F4	TWB-1018-4	£62.99
254 x 457	150	2	TWB-F5	TWB-1018-6	£76.19
254 x 762	50	3	TWB-F4	TWB-1030-2	£50.96
254 x 762	100	3	TWB-F4	TWB-1030-4	£80.01
Washer to suit all TWB-XXXX-X Bumpers - 2½"				TWB-W	£2.13
Fixing: 16mm dia x 180mm long - for concrete				TWB-F4	£4.15
Fixing: 16mm dia x 220mm long - for concrete				TWB-F5	£7.56

+ Priced per metre  
\*7 holes recommended per 3M length

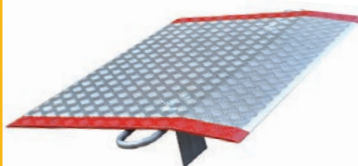
Description	Model	Price
100 x 100 D-Section - lengths up to 3M	TWB-E-100	£68.95+
Optional steel fixing strip for TWB-E-100	TWB-EST	£16.49+
Fixing holes drilled in TWB-E-100 as required*	TWB-EH	£4.68
Fixing: 12mm dia x 135mm long - for concrete	TWB-F1	£2.87

## Dockplates

- » Used for (un)loading vehicles from a raised loading area
- » Typically for use with pallet trucks, sack trucks, roll cages & pedestrian access
- » Standard features; manufactured from high tensile aluminium with built in anti-slip finish, loop type handles for movement & one pair of locking legs to prevent movement



- » Options; fork truck handles (FTH-1) for movement by fork truck (recommended for plates marked\*) & side curbs with castors (SCC-2) to aid movement



Other sizes & capacities available on request - please call for details

Overall Size W x L mm	Height Differential		Load Cap. kg	Model	Price
	Max Poss.	Max Rec.			
915 x 1220	178	125	770	3648	£644.79
1220 x 610	76	50	2040	4824	£513.91
1220 x 915	127	90	1360	4836	£643.72
1220 x 915	127	90	2450	H4836*	£798.00
1220 x 1220	178	125	1020	4848*	£768.21
1220 x 1220	178	125	1810	H4848*	£965.05
1220 x 1525	228	160	810	4860*	£889.51
1525 x 1220	178	125	1270	6048*	£892.69
Fork Truck Lifting Handles (pair)				FTH-1	£159.60
Side Curbs with castors for easy movement (pair)				SCC-2	£251.11

## Wheel Chocks



- » Wheel chocks are a low cost effective way of minimising the unexpected movement of vehicles whilst parked or being (un)loaded
- » Moulded rubber units have built-in lifting handles
- » An anti-theft retaining chain is available



Description	Overall Size L x W x H mm	Model	Price each
Rubber Chock	270 x 190 x 190	TWC-1	£39.05
Retaining Chain	5M Long	TWC-2	£41.92
Aluminium Chock	400 x 180 x 180	TWC-3	£99.80
Rubber Chock	150 x 175 x 150	TWC-8	£26.39
Steel Chock	268 x 200 x 230	TWC-10	£35.85

## Dock Lights

- » Swings & pivots, allowing the light to be positioned to illuminate the inside area of a vehicle during (un)loading
- » All units emit 1000 lumen light output
- » Extended arm length of 1060mm
- » IP21 rated for indoor applications only



Description	Model	Price
Dock Light - 240v 80W Halogen	TWDL-3-240	£264.93
Dock Light - 110v 80W Halogen	TWDL-3-110	£264.93
Dock Light - 110/240v 12W LED	TWDL-3L-240	£316.01

## PVC Strip Curtains

- » Bespoke-made curtains to fit any location & opening
- » Light to heavy duty use
- » Ambient or freezer grade
- » Pedestrian & forklift friendly
- » Supplied ready to hang

### Information

DESPATCHED  
WITHIN 2/3 DAYS  
OF ORDERING

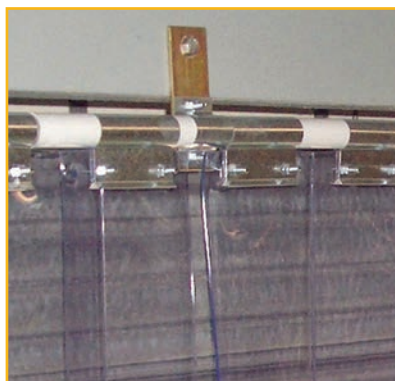


- » High quality clear PVC
- » DOP & DEHP free

- » Flexible -15°C to +50°C (polar to -25°C)
- » UV stabilisers & high impact resistance

### Swivel-hinge

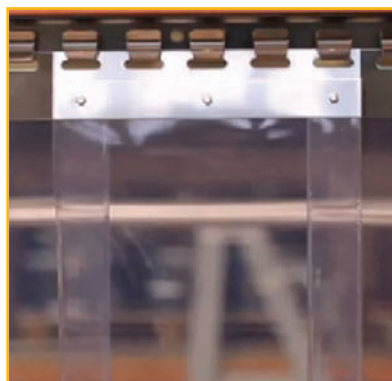
For heavy & frequent use by forklifts. Strips bolted into hinges so they can't be pulled down.



- » Strip widths: 300 & 400mm
- » Strip thickness: 3 & 4mm
- » Overlap options: Min & Max

### Hook-on

For pedestrian, pallet truck & occasional forklift use. Available in galvanised or stainless steel.



- » Strip widths: 200, 300 & 400mm
- » Strip thickness: 2, 3 & 4mm
- » Overlap options: Min, Med & Max

### Quickmount™

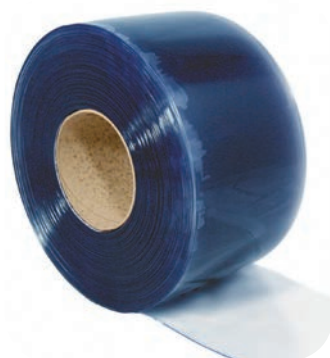
For pedestrian areas where safety is key. No steel plates, so no one can be hurt if strips are dislodged.



- » Strip widths: 200, 300 & 400mm
- » Strip thickness: 2, 3 & 4mm
- » Overlap options: Min, Med & Max

PVC in standard grade, polar grade, double ribbed & anti-UV

Replacement  
Strips & Rolls  
Available in all sizes  
& formats. Supplied  
in 50M rolls or cut  
to any length &  
priced per metre



EXPRESS  
DELIVERY

ALL CURTAINS  
PRICED INDIVIDUALLY  
BASED ON HEADRAIL  
& PVC OPTIONS

CONTACT US  
FOR A QUOTE